

*Better Service*

*Better Performance*



**FUTURES INDIA PVT. LTD.**  
**Building No.5, F/F, Malviya Nagar (Corner**  
**Market), New Delhi - 110017**  
**info@futuresindia.in**  
**011-42509668, 42509669**

CE IVD EN ISO

*For Your Better Experience*

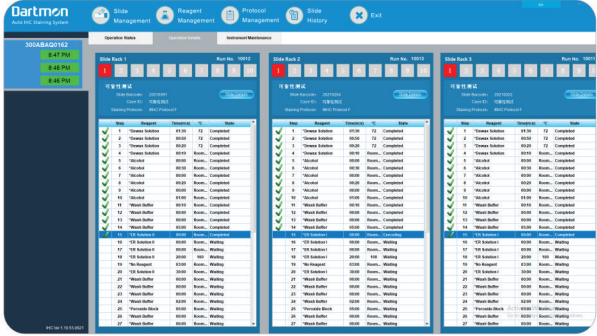
**AS330PLUS**  
**Fully Automatic IHC Stainer**

# ADVANCED TECHNOLOGY

- Through the innovative STIR® solid-liquid mixing technology and SWEEP® cleaning technology, overcome the core problem of insufficient reaction due to the inability of the antibody to fully penetrate the tissue, and ensure the uniform coverage of the antibody on the entire slide.
- Independent heater to ensure independent and accurate temperature control for each slide.
- High-sensitive liquid level detection technology to effectively avoid the waste of antibodies.
- Automatic lighting for better observation in reaction chamber and ancillary station.



3 independent slide trays ensuring continuous loading



Real-time monitoring of each test step



LED Display of the test remaining time



Reagent addition at any time of the operation



*UPGRADED AND COMPLETE SOLUTION  
FOR BETTER PERFORMANCE*

## SENSITIVE DETECTION SYSTEM

- Unique miniature polymer and antibody (FAB') labeling technology enables the polymer more accessible to cells, increasing the reagent sensitivity.
- Accurate and reliable Detection System is suitable for universal antibodies.

## ENHANCED ANCILLARY REAGENT

- Specially made reagents to match better with the whole system for stable and good performance.

## QUALIFIED ANTIBODY

- Clinically validated Ready-To-Use antibodies





Futures

## Fully Automatic IHC Stainer

### Technical Specifications

#### Instrument

Fully automated from baking to counterstaining

#### Operation Software

Can connect up to 5 instruments

Flexible protocol settings

Real time monitoring

Instant Alarm of Alert or Notification

#### Informatic

Connect to LIS through restful API

#### Application Range

IHC, FISH\*

#### Applicable Tissue

All tissue types, made into Paraffin section or

Frozen section

#### Staining Mode

Single Stain, Double Stains\*, Multi-Stains\*

#### Slide Tray Chamber

3 chambers work independently

#### Slide Positions

30 slides

#### Reagent Positions

36 positions

#### Reagent Consumption

120ul

#### Reagent Addition

Support for adding all reagents during operation

#### Liquid Level Detection

Precise detection sensors

#### Temperature Control

Independent heater, up to 100°C

#### Test Time

≤3.5 hours (depending on the protocol)

#### Test Remaining Time

LED display on the instrument window and display in the software interface

#### Waste Management

The waste is separately collected into hazardous and bulk waste bottle

#### Recognition System

Automatic scanning of slide and reagent information

#### Probe

Made of Teflon coated titanium alloy

#### Ancillary Bottle

2.5L/bottle

#### Bulk Waste Bottle

≥18L/bottle

#### Hazardous Waste Bottle

2.5L/bottle

• INNOVATIVE

• RELIABLE

• EFFICIENT

